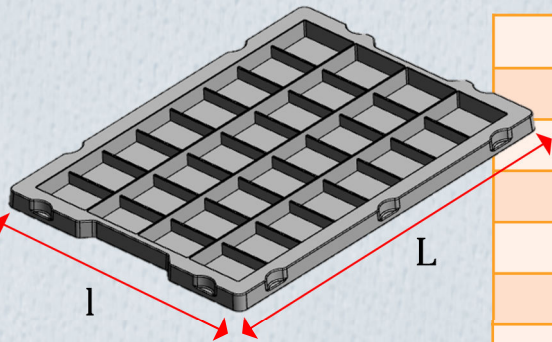


More than 10,000 possibilities with this new range of trays! You choose:

- Outer dimensions of the tray has 9 possibilities.
- Inner dimensions of your cavities has 3 shapes of cavities.
- Height of the tray has 4 possibilities.

1st step: outer dimensions of the tray: 9 possibilities (E1)

These trays are parckable in 6 sizes of plastic containers and 3 sizes of cardboard boxes. You choose the size of your tray among:



Size(mm)	Packable in	SET reference
TRAYS packable in plastic containers		
340 x 255	VDA & KLT	1
355 x 255	Galia 4312 & 4322	2
360 x 260	Galia 4312 & 4322	3
534 x 350	VDA & KLT	4
540 x 355	VDA & KLT	5
555 x 360	Galia 6422 & 6432	6
TRAYS packable in cardboard boxes		
360 x 275	Galia C14 & C13 & C12	7
385 x 285	Galia A14 & A13 & A12	8
585 x 385	Galia A11 & A10 & A9	9

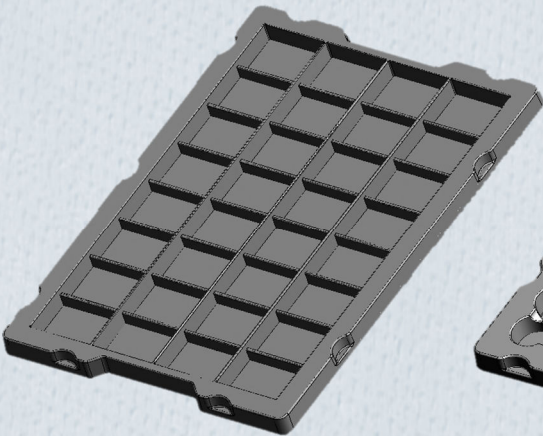
Your choice E1:

SET ref= _

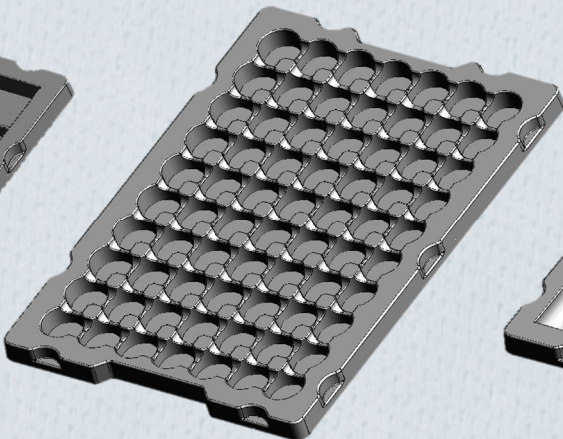
Cutting tolerance: +/- 1,5 mm

2nd step: shape of cavities and their inner dimensions (E2)

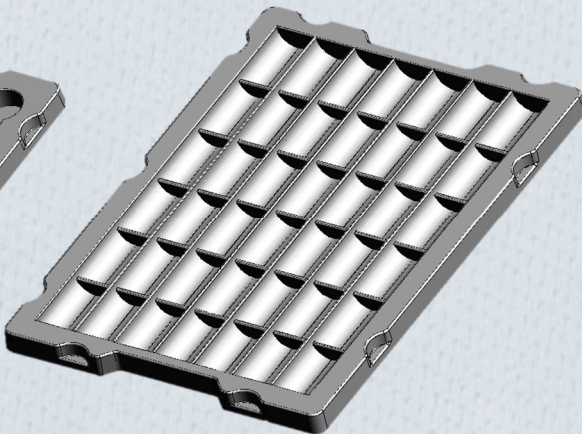
3 shapes of cavities are available, select the one that suits your parts:



Rectangular



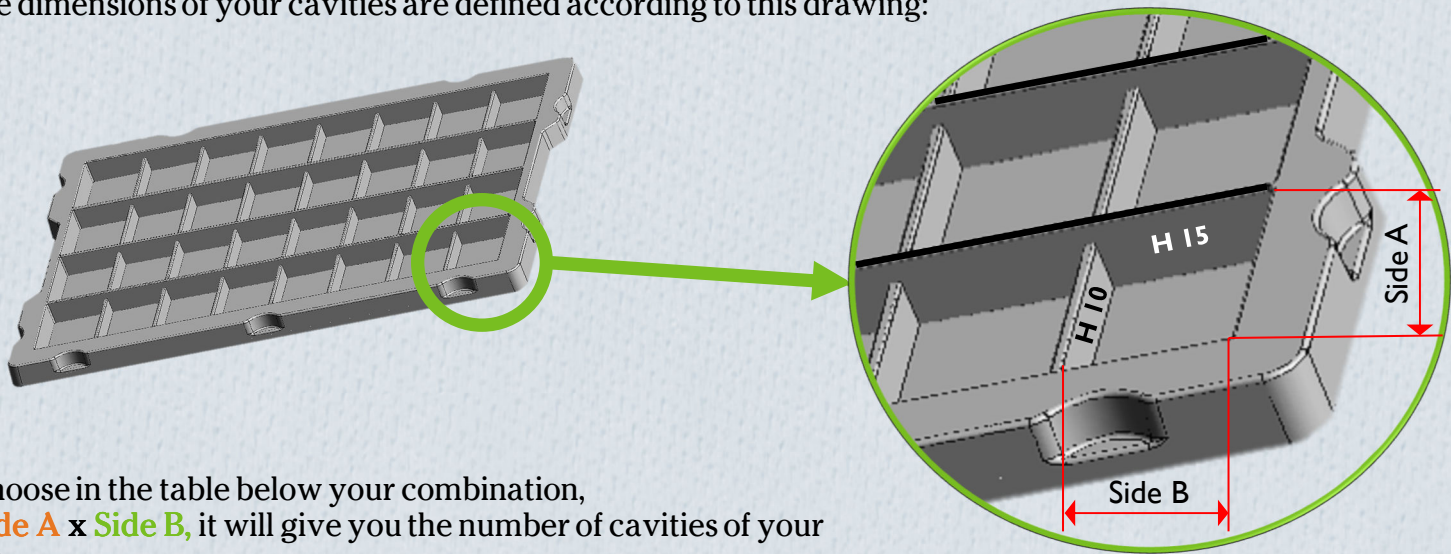
Round



Cylindrical

1: Rectangular cavities: choose the size from 176 possibilities

The dimensions of your cavities are defined according to this drawing:



Choose in the table below your combination, Side A x Side B, it will give you the number of cavities of your tray

Eg.: tray
360x260 mm with cavities
70 x 91 mm
→ 9 cavities/tray

! For trays 534 x 350; 540 x 355; 555 x 360 and 585 x 385 mm, this number has to be multiplied by 2 to obtain the number of cavities of your tray.

Eg.: tray
555x360 mm with cavities
70 x 91 mm
→ 18 cavities/tray

		Side A										
		220	108	70	52	40	33	27	23	20	18	16
Side B	320	1	2	3	4	5	6	7	8	9	10	11
	293	1	2	3	4	5	6	7	8	9	10	11
	266	1	2	3	4	5	6	7	8	9	10	11
	239	1	2	3	4	5	6	7	8	9	10	11
	158	2	4	6	8	10	12	14	16	18	20	22
	145	2	4	6	8	10	12	14	16	18	20	22
	131	2	4	6	8	10	12	14	16	18	20	22
	118	2	4	6	8	10	12	14	16	18	20	22
	104	3	6	9	12	15	18	21	24	27	30	33
	91	3	6	9	12	15	18	21	24	27	30	33
	77	4	8	12	16	20	24	28	32	36	40	44
	64	4	8	12	16	20	24	28	32	36	40	44
	50	6	12	18	24	30	36	42	48	54	60	66
	37	8	16	24	32	40	48	56	64	72	80	88
	23	12	24	36	48	60	72	84	96	108	120	132
	10	24	48	72	96	120	144	168	192	216	240	264

Your choice E2:

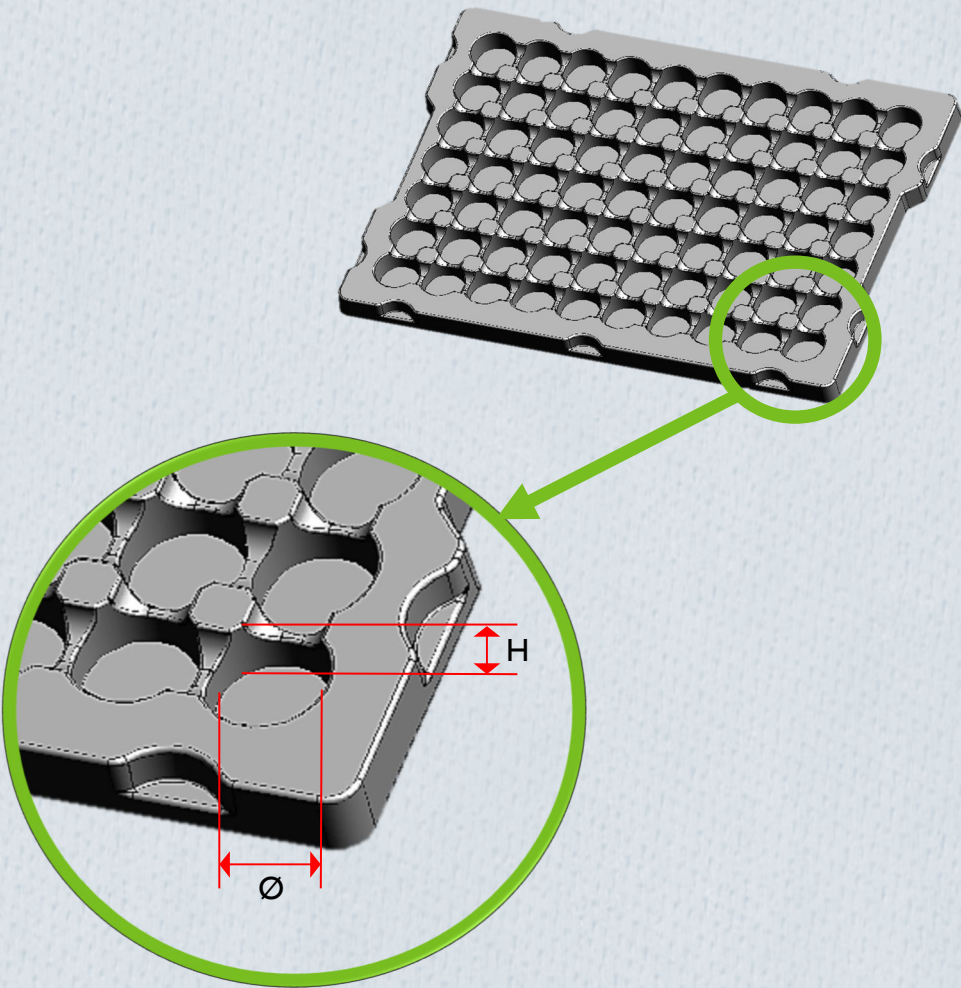
Rectangular cavities

Side A x Side B

— x — mm

2: Round cavities: choose the size from 19 possibilities

The dimensions of your cavities are defined according to this drawing:



Choose in the table beside your combination, **cavity Ø** x **cavity height**, it will give you the number of cavities of your tray.

Eg: tray 360x260 mm with cavities

Ø 28 - **H 15** mm → 70 cavities/tray

! For trays 534 x 350; 540 x 355 ; 555 x 360 and 585 x 385 mm, this number has to be multiplied by 2 to obtain the number of cavities of your tray

Eg: tray 555x360 mm with cavities

Ø 28 - **H 15** mm → 140 cavities/tray

Your choice E2:

Round cavities

Ø

x

H

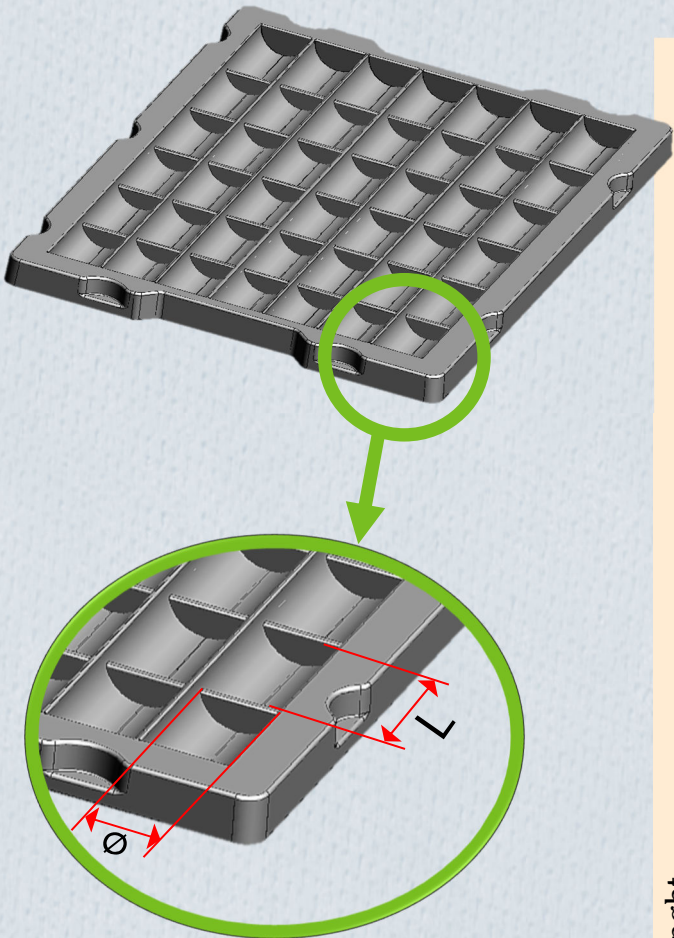
x

mm

		Cavity height		
		8	12	15
Cavity Ø	10	260	-	-
	12	260	-	-
	15	-	150	-
	18	-	140	-
	22	-	96	-
	25	-	-	88
	28	-	-	70
	32	-	-	54
	36	-	-	45
	40	-	-	35
	45	-	-	28
	50	-	-	24
	55	-	-	20
	60	-	-	16
	70	-	-	12
	77	-	-	9
	84	-	-	8
	102	-	-	6
	125	-	-	3

3: Cylindrical cavities: choose the size from 216 possibilities

The dimensions of your cavities are defined according to this drawing:



Choose in the table beside your combination, **cavity Ø** x **cavity lenght**, it will give you the number of cavities of your tray

Eg.: tray 360x260 mm with cavities Ø 20 - L 320 mm

→ 9 cavities/tray

! For trays 534 x 350; 540 x 355; 555 x 360 and 585 x 385 mm, this number has to be multiplied by 2 to obtain the number of cavities of your tray

Eg.: tray 555x360 mm with cavities Ø 20 - L 320 mm

→ 18 cavities/tray

Your choice E2:

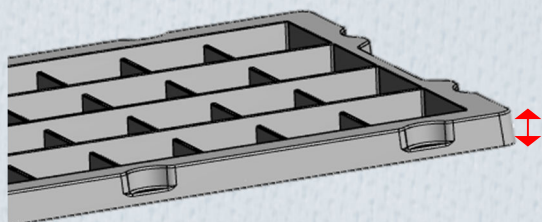
Cylindrical cavities

Ø x L

__ x __ mm

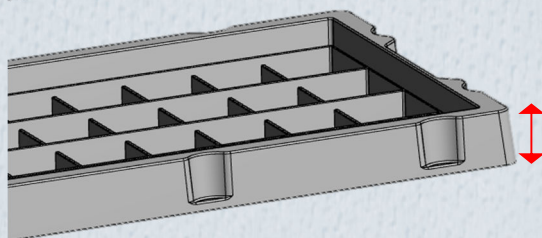
		Cavity Ø								
		8	10	12	14	16	18	20	25	30
Cavity lenght	320	20	17	15	13	11	10	9	8	7
	307	20	17	15	13	11	10	9	8	7
	293	20	17	15	13	11	10	9	8	7
	280	20	17	15	13	11	10	9	8	7
	266	20	17	15	13	11	10	9	8	7
	253	20	17	15	13	11	10	9	8	7
	239	20	17	15	13	11	10	9	8	7
	226	20	17	15	13	11	10	9	8	7
	212	20	17	15	13	11	10	9	8	7
	199	20	17	15	13	11	10	9	8	7
	185	20	17	15	13	11	10	9	8	7
	172	20	17	15	13	11	10	9	8	7
	158	40	34	30	26	22	20	18	16	14
	145	40	34	30	26	22	20	18	16	14
	131	40	34	30	26	22	20	18	16	14
	118	40	34	30	26	22	20	18	16	14
	104	60	51	45	39	33	30	27	24	21
	91	60	51	45	39	33	30	27	24	21
	77	80	68	60	52	44	40	36	32	28
	64	80	68	60	52	44	40	36	32	28
	50	120	102	90	78	66	60	54	48	42
	37	160	136	120	104	88	80	72	64	56
	23	240	204	180	156	132	120	108	96	84
	10	480	408	360	312	264	240	216	192	168

3rd step: height of your tray (E3)



Choose the height of your trays from 4 possibilities according to the height of your parts

H 15 mm | H 20 mm | H 25 mm | H 30 mm



Note: only the height of the tray frame can change - the height of the dividers of cavities inside the tray is not possible to change

Your choice E3: H __ mm

If you need any information or advice about these new products, any help to define the raw material and thickness that are the most relevant for your parts, please contact us:

Email: info@set-industries.fr

Phone: +33 (0)4 50 44 89 73

YOUR FINAL REFERENCE⁽¹⁾:

H

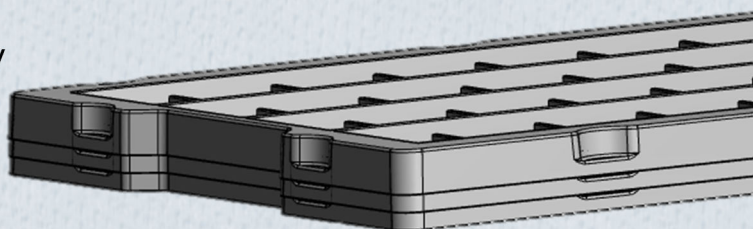
X

(1) According to the filled fields E1 – E2 – E3;

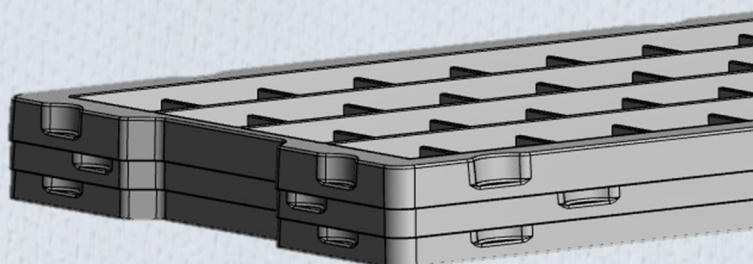
STACKING OF THE TRAYS: support or not on your parts

For all these trays, you have the possibility to take support or not on your parts. Stacking stops are di-symetriccaly placed on the frame of the tray. You have 2 possibilities:

*Stacking without rotation between each tray: the superior tray will support upon the parts of the lower tray.
Space saving when stacking empty trays,*



*Stacking with 180° rotation between 2 trays:
In this case, the superior tray doesn't support upon the parts of the lower tray.
Please contact us for more information*

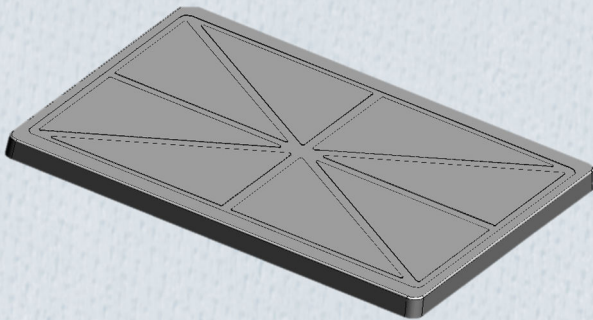


OPTION: Cover

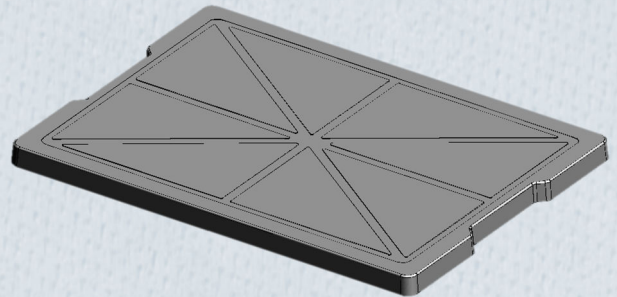
To avoid stacking of the trays, 5 references of covers are available:

Size (mm)	Packable in	Height (mm)	SET reference
<i>TRAYS packable in plastic containers</i>			
340 x 255	VDA & KLT	15	1C15
355 x 255	Galia 4312 & 4322	15	2C15
360 x 260	Galia 4312 & 4322	15	3C15
<i>TRAYS packable in cardboard boxes</i>			
360 x 275	Galia C14 & C13 & C12	15	7C15
385 x 285	Galia A14 & A13 & A12	15	8C15

1C15
(without handhold)



2C15 - 3C15 - 7C15 - 8C15
(with handhold)

**AND STILL ...**

Our 650 standard tray references, with 3 shapes of cavities, packable in cardboard boxes

- C12 / C9A / C12A / C4 / C6 / C8 / C16A
- Galia A16 / A15 / A14 / A13 / C40 / C16

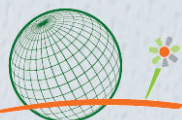
To find more information, visit our website: www.set-industries.fr

Or please contact us:

Email: info@set-industries.fr
Phone: +33 (0)4 50 44 89 73



écocitoyenneté



écoconception



emballageéco



recyclage



hygiène